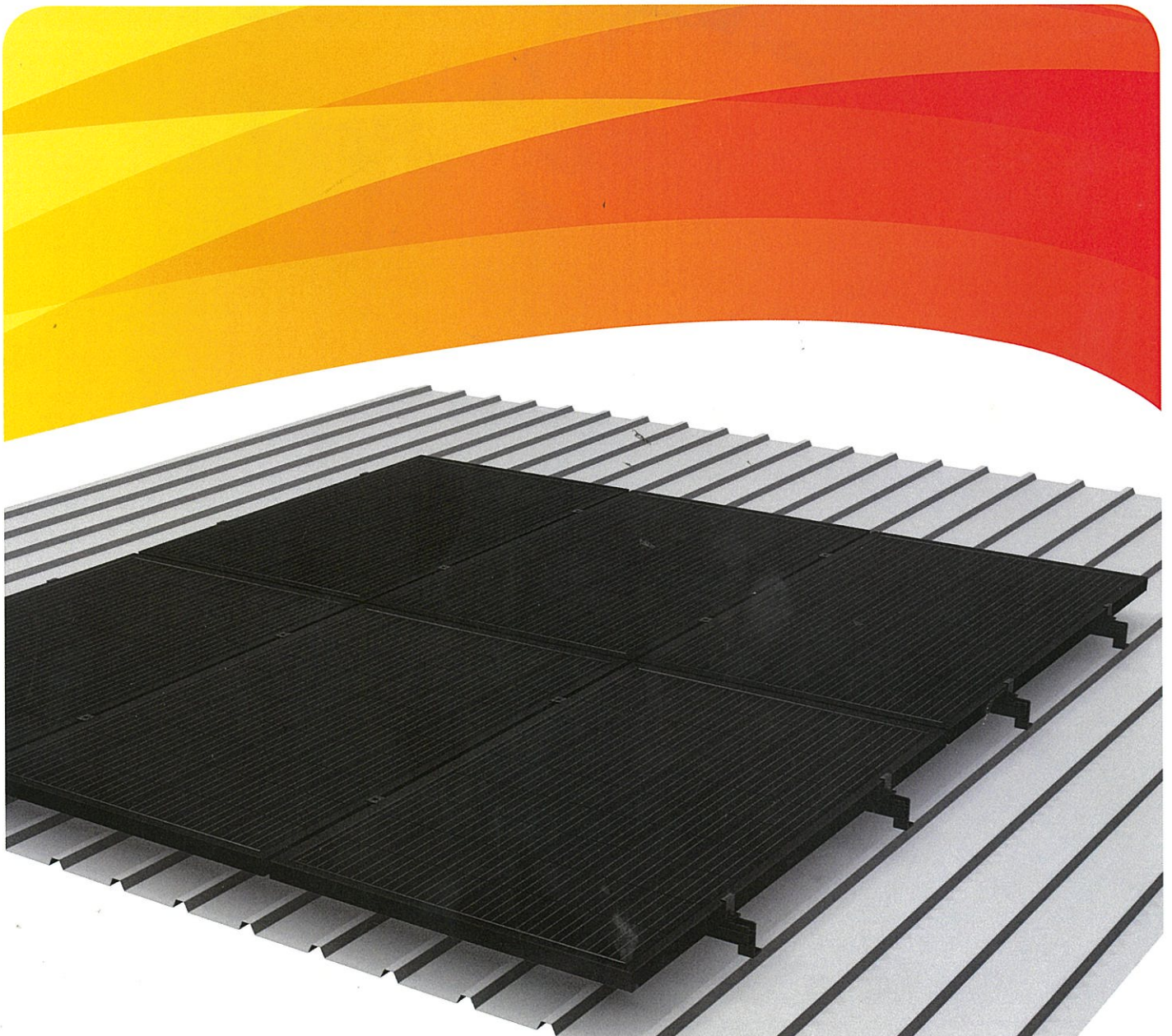


PV-ezRack SolarRoof-Black Anodized

Reliable, robust roof mounting system with high quality components designed for the harshest conditions.



PV-ezRack SolarRoof-Black Anodized

PV-ezRack SolarRoof is an universal mounting system for PV installation on roof, which is available for black and silver. The components are easy to install and can be used for flush as well as tilted systems, on a large variety of roof types. The interfaces, rails and clamps use high quality, robust and corrosion resistant materials including structural grade aluminium alloy (AL6005-T5) and stainless steel (SUS304).

Main Benefits

Quick and easy installation

Innovative and internationally patented, the Z-Module technology is used in almost all SolarRoof components. The Z-Module provides a quick, easy and safe installation method. It can be inserted in to the rail at any given point, and secured with just three hand grips.

Versatility

A large variety of tin roof fixings, tilt legs and adapters help ensure that you will find a suitable fixing method for almost every roof, where fixing with or without penetration is required.

Wide range of tilting

With three adjustable tilt legs, these parts can tilt panels from between 10-60 degrees. Through its innovative design, the tilt legs can cope with all common purlin distances.

Universal

SolarRoof has suitable mid and end clamps for every size of solar panel including frameless, thin film panels or special clamps for cyclonic regions. In the growing range of clamps, cable clips, adapters and accessories you're sure to find the parts you require for your residential rooftop mounting needs.



C-U/30/46-BA

Universal Clamp
PV-ezRack Universal Clamp (with dual function end clamp), is a most common for modules from 30 in height. Inbuilt is also available.



ER-R-ECO-BA

ER-R-ECO

Specifically developed to achieve larger spans, the SolarRoof ECO-Rail has reduced the number of required fixings. The ECO-Rails have two patented Z-Module channels with one at top for panel mounting and the second on side for connecting to the roof interface. The ECO-Rail comes in 2100, 3150 and 4200mm lengths.

10 Year
Warranty*

Commercial

Residential

International Patent
PCT/AU2009/000616

*see Clenergy PV-ezRack warranty for further details

0/46-G-BA

ip
al Clamp,
ty (inter and
cable with
ed PV
m to 46mm
unding clip

ER-EC-ST-BA

Inter and End clamps

The PV-ezRack Inter and End clamps offer a simple, easy to use and robust fixing of the PV panels (of all sizes) using the patented Clenergy Z-module. Compatible clamps for thin film modules are also available.

ER-IC-ST--BA

TL-10/15/PS-BA

Tilt Legs

The available adapters, non-penetration clamps and base rails make the application of this part truly universal.

TL-15/30/PS-BA



Available accessories

Isolator bracket



Rail caps



ER-SP-ECO-BA

Splice for ECO Rail

Using high-quality aluminum material and stainless steel bolts, the ECO Rail Splice allows for convenient extension of rails without on-site cutting and processing.



ER-I-05-BA

Tin interface

The robust aluminium L-feet, which provides a height adjustment of almost 30mm, is designed for corrugated and trimdek type tin roofs. It comes with a Z-Module or Click Module plus bolt preassembled, with a screw which includes bonded sealing washer plus an EPDM rubber pad.



Materials

AL6005-T5 | SUS304

Contact us or one of our qualified resellers for a personalised quotation today.



Worldwide network



Clenergy Australia

1/10 Duerdin Street, Clayton VIC 3168 Australia
 Tel: +61 3 9239 8088 Fax: +61 3 9239 8024
 E-mail: sales@clenergy.com.au www.clenergy.com.au

Clenergy China

999-1009 Min'an Rd, Huoju Hi-tech Ind. Dev. Zone
 Xiang'an District 361101, Xiamen, Fujian, China
 Tel: +86 592 311 0088 Fax: +86 592 599 5028
 E-mail: sales@clenergy.com.cn www.clenergy.com.cn

Clenergy Europe

Esplanade 41, 20354 Hamburg, Germany
 Tel: +49 40 3562 389-00
 E-mail: sales_de@clenergy.com

Clenergy Japan

SOHO STATION 401, 24-8 Yamashita-cho, Naka-ku
 Yokohama, 231-0023 Japan
 Tel: +81 45 228 8226 Fax: +81 45 228 8316
 E-mail: sales@clenergy.co.jp www.clenergy.jp

Clenergy Philippines

145 Yakal St., San Antonio village, Makati City, Philippines
 Tel: +63 977 8407282 +63 977 8407240
 E-mail: sales_ph@clenergy.com www.clenergy.ph

Clenergy Thailand

9/2, 5th Floor, Vorasin Building, Soi Yasoo 2, Viphavadee-Rungsit Road,
 Chomphon Sub-district, Chatuchak District, Bangkok 10900
 Tel: +66 63 228 0200, +66 81 969 5152
 E-mail: sales_th@clenergy.com, support_th@clenergy.com

