

Solar Smart Monitor KR-63



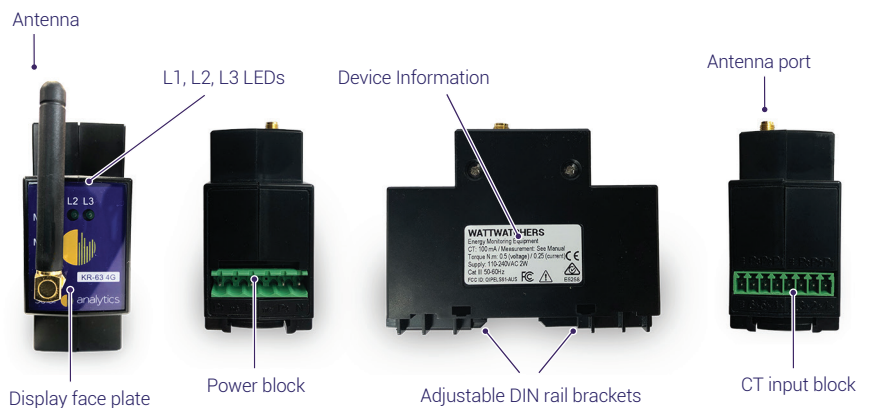
solar analytics



The KR-63 provides one of the most flexible, compact and reliable solar monitoring solutions on the market.

Features

- ✓ Install in less than 15 min (typical residential site)
- ✓ Bundled with 3 CTs or 6 CTs
- ✓ 5 second to 5 minute measurement and reporting on each of 3 or 6 circuits
- ✓ 1% Revenue Grade Accuracy
- ✓ 5 year warranty
- ✓ Small 35mm wide (2 pole) DIN rail mount
- ✓ Suitable for single, two and three phase
- ✓ Compatible with all solar PV systems and inverters
- ✓ Solar PV and/or AC load consumption data
- ✓ Unlimited devices per site



The KR-63 is equipped with 4G and up to six channels, and can measure almost any combination of single phase, dual phase or three phase AC, in up to five second increments from 60-3000 Amps.

Our software allows remote support, calibration, diagnostics, commissioning, polarity and phase rotation for all hardware, in addition to our full monitoring suite for end users and installers.

Typical Configuration

Single Phase Configuration:



For a typical single phase application the KR-63 can monitor the solar PV plus whole site mains and four other household load circuits e.g. air con, hot water.

Three Phase Configuration:



For a typical three phase application one KR-63 can monitor all three incoming phases of the solar PV system along with whole site mains circuits.

Installation

- Plug and play installation
- Install in less than 15 minutes (typical residential site)
- Comes with a pre-wired easy fit power block terminal (for 1 or 3 phase)
- Easy line wiring diagrams provided with each kit
- Online registration and commissioning with a subscription.
- Help available via our Support Page and *Steps to Installation* video
- Business hours live support available from Solar Analytics 1300 651 137

Hardware Specifications

Electrical Characteristics

Measurement configuration	Voltage Current Mode	1,2 or 3 phase (Neutral required) CT Fundamental only/all harmonics
Measurement accuracy	Current and voltage Power Frequency Power factor Active energy Reactive energy	0.5% of reading Real power: 1% of reading from pf 0.8 leading to 0.5 lagging; Reactive power: 2% below 0.5 lagging 200ppm 2% from 0.8 leading to 0.5 lagging Class 1 as defined by IEC 62053-21 Class 2 as defined by IEC 62053-23
Input-voltage characteristics	Measured voltage Permissible overload	50 to 280 V AC 1.15Un
Input-current characteristics	Standard CT ratings Internal burden Turns ratio Permissible overload	60A(10mm) 120A(16mm) 200A(25mm) 400A(25mm) 600A(35mm) 2.7 ohm Adjusted to suit CT; field updateable 300 mA continuous
Internal power	CT Connections	0.6 W Single Phase (P1) Not isolated (neutral referenced)

Mechanical Characteristics

Weight	0.3 kg
IP degree of protection	IP50 (front display) (higher in cabinet)
Dimensions	35 x 90 x 66 (mm) (2 pole)
Connection	Voltage Current: 3 meter version
	6 positions / 4 connections 5.08 mm pitch FCI part 20020007-H061B01LF 6-way 3.81mm pitch FCI part 20020004-D061B01LF

Environmental Conditions

Operating temperature	-5 °C to +55 °C
Installation / pollution category	III / 2
Electromagnetic immunity	Electrostatic discharge Immunity to radiated fields Immunity to fast transients Immunity to impulse waves
	Level III (IEC 61000-4-2) Level III (IEC 61000-4-3) Level IV (IEC 61000-4-4) Level IV (IEC 61000-4-5)

Communication and Data

4G	Pentaband
Antenna	External SMA
SIM	Internal (accredited partners)
Data volume (5 sec reports)	
Data volume (30 sec reports)	
All data and communications provided by Solar Analytics	

Power Quality

Frequency measurement	45 to 65 Hz, 0.01 Hz
Voltage	50-300V, 0.1V

Compliance Certificates

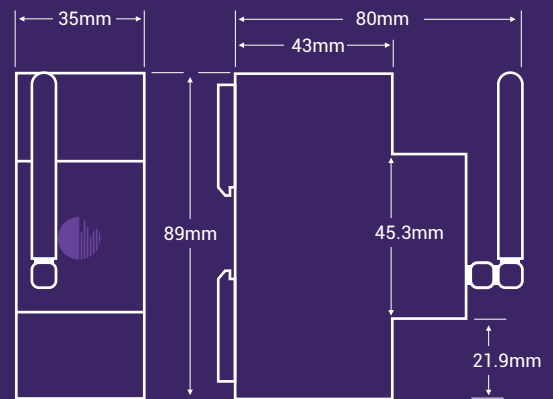
A-TICK	E5258
Safety	AS/NZ60950.1:2011
Conducted Emissions	AS/NZS CISPR 22:2009 ClassB
Radiated Spurious Emissions	AS/NZS 4268:2008 +A1:2010 C 8.2 & 9.1

NOTE: All specifications may be subject to change.

Dimensions

Front

Side



Current Transformers

Must use provided current transformers (CTs).
CTs can be recalibrated at installation.

KR-63 60A

Standard device.
Comes with 3 or 6 CTs, each 60A, 10mm diameter.



KR-63 120A

Standard device.
Comes with 3 or 6 CTs, each 120A, 16mm diameter.



KR-63 200A

For larger systems.
Comes with 3 or 6 CTs, each 200A, 25mm diameter.



KR-63 400A

For larger systems.
Comes with 3 or 6 CTs, each 400A, 25mm diameter.



KR-63 600A

For larger systems.
Comes with 3 or 6 CTs, each 600A, 35mm diameter.



solar  analytics

1300 651 137

www.solaranalytics.com

sales@solaranalytics.com